



HOLISTIC APPROACH TO GRAFFITI CONTROL

**Metal Shield and Custom Shield  
Measuring Guide**

# Metal Shield and Custom Shield Measuring Guide:

## *Recommended Items*

### Technology:

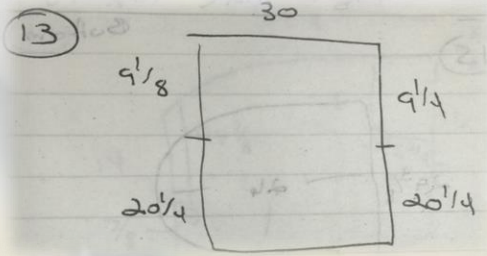
- Ipad and Rubber Tipped Stylus
- Apps to use: Penultimate (Free), Notability (Fee Based), or My Measures Pro (Fee Based)

### Or Basic:

- Full size notebook
- Pen or pencil

### *Other Items*

- Tape Measure with at least 1/16 in markings
- Small and large levels-for complex pieces
- Permanent Marker (Part Numbering)
- Dry erase pen (Measuring Marks Only)
- Camera if not using Ipad





## Metal Shield and Custom Shield Measuring Guide:

### Step 1:

Determine the order you will use to measure.

Examples: Left to Right, Right to Left

### Step 2:

Determine part numbering system. The shorter the better.

Examples: "MRR1-1" **M**en's **R**est**R**oom floor **1** piece #**1**. Then change last digit for each continuous piece. Change the first segment as you change floor, room, building, etc. This should create an easy flow and understanding.

### Step 3:

Mark part numbers on the lower right hand corner of all pieces in the order determined in Step 1. Use a permanent marker to mark each piece.

SM-PST-14-8b

Part Number Example

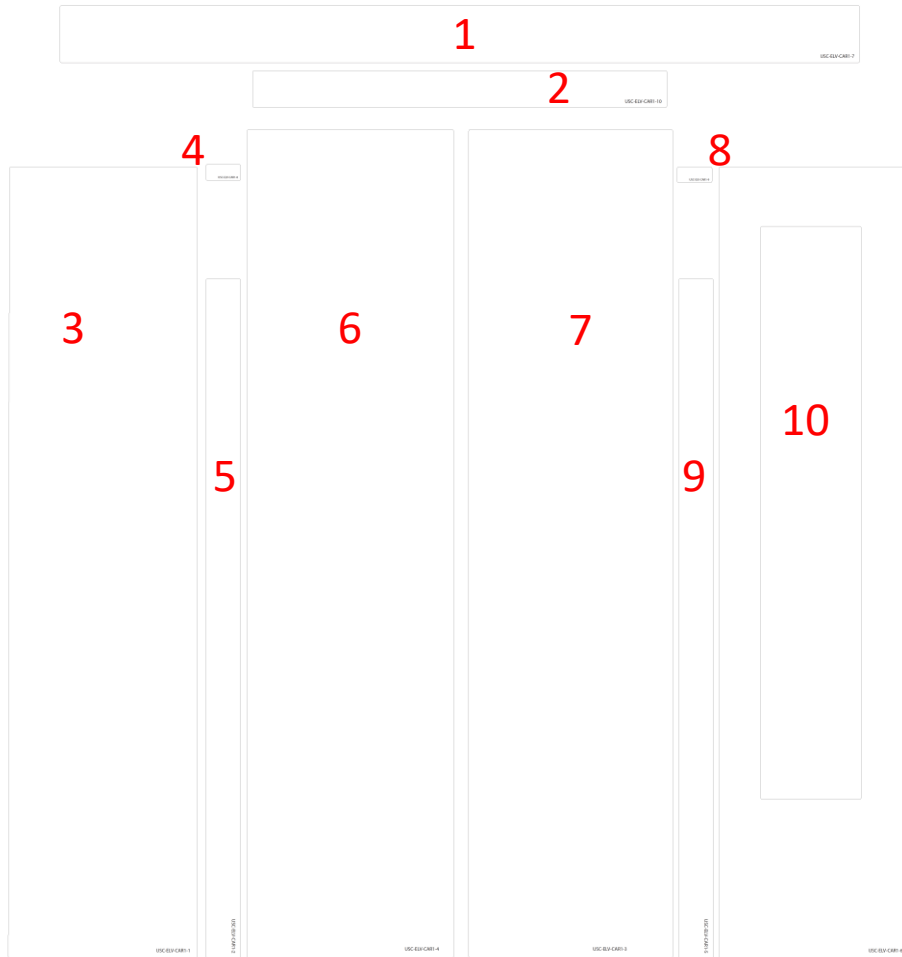
**GRAFFITI SHIELD** INC.



Example:  
BWI-18  
Building **B**  
Women's  
**1**<sup>st</sup> Floor  
Piece **18**

# Metal Shield and Custom Shield Measuring Guide:

## Layout Example (Before and After)





## Metal Shield and Custom Shield Measuring Guide:

Step 4:

Determine edge lip and measuring points

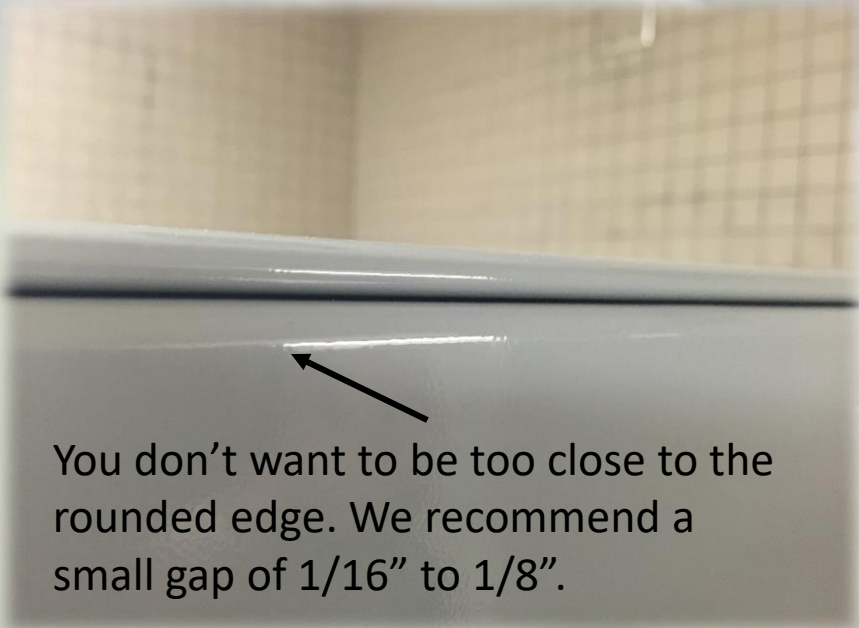
Step 5:

Measure width/horizontal side and capture

Step 6:

Measure height/vertical side and capture

*\*Note Panel Full Part Number in Ipad Drawing or Notebook*



You don't want to be too close to the rounded edge. We recommend a small gap of 1/16" to 1/8".



MP-2-5



## Metal Shield and Custom Shield Measuring Guide:

### Step 7:

Note any cutouts in your drawing. We recommend using a different colored pen to distinguish them apart.

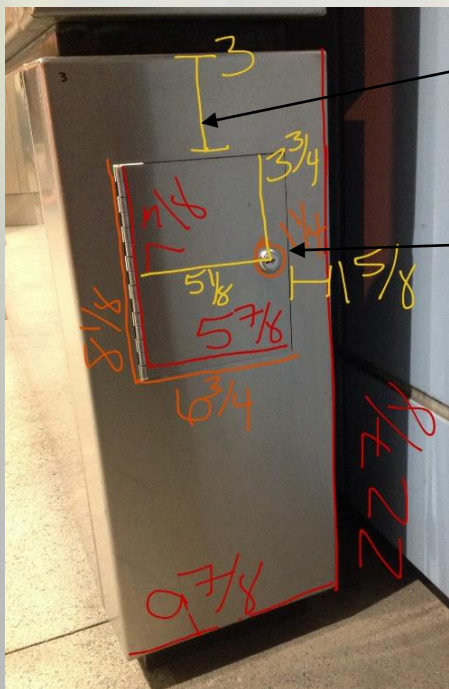
#### *Items to mark:*

Cutout width and height (Orange)

Cutout distance from top edge, and left or right edge (Yellow)

Note any doors or boxes needing cutout. Same policy as above.

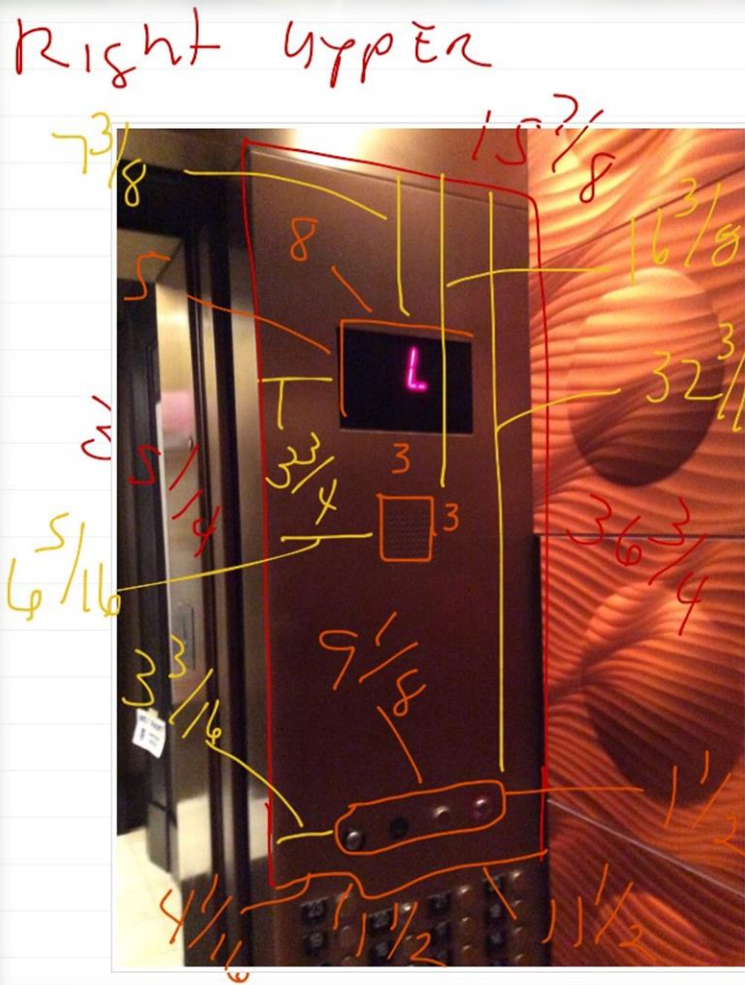
If circular cutouts are needed, for example a key hole, then same noting is needed, except that the measuring is now from center of circle. Please also note the diameter of the circle. Make circle at least 1/8" bigger or more.





## Metal Shield and Custom Shield Measuring Guide:

## Measurement Drawing



# CAD Drawing

## Final Piece Installed

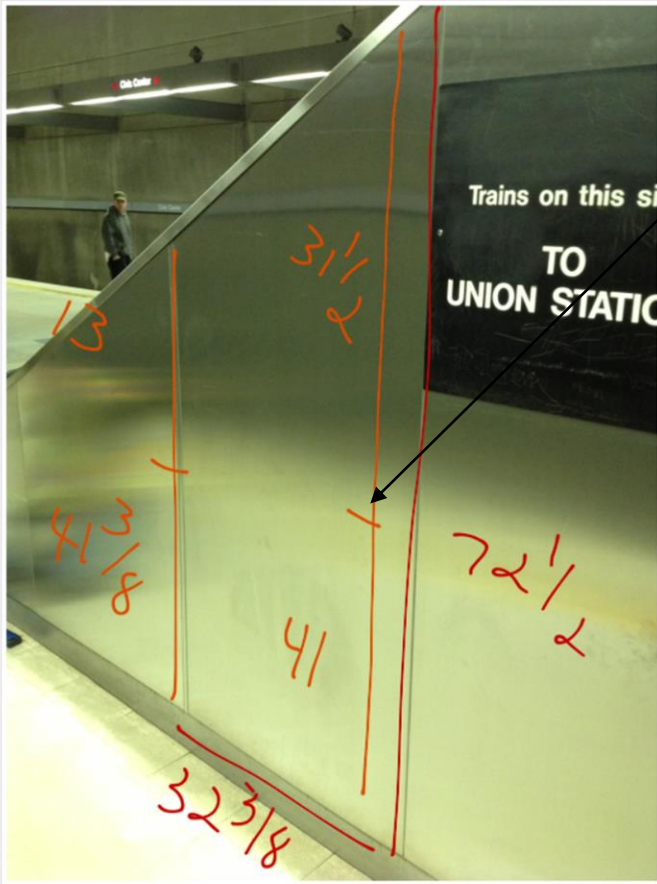


## Metal Shield and Custom Shield Measuring Guide:

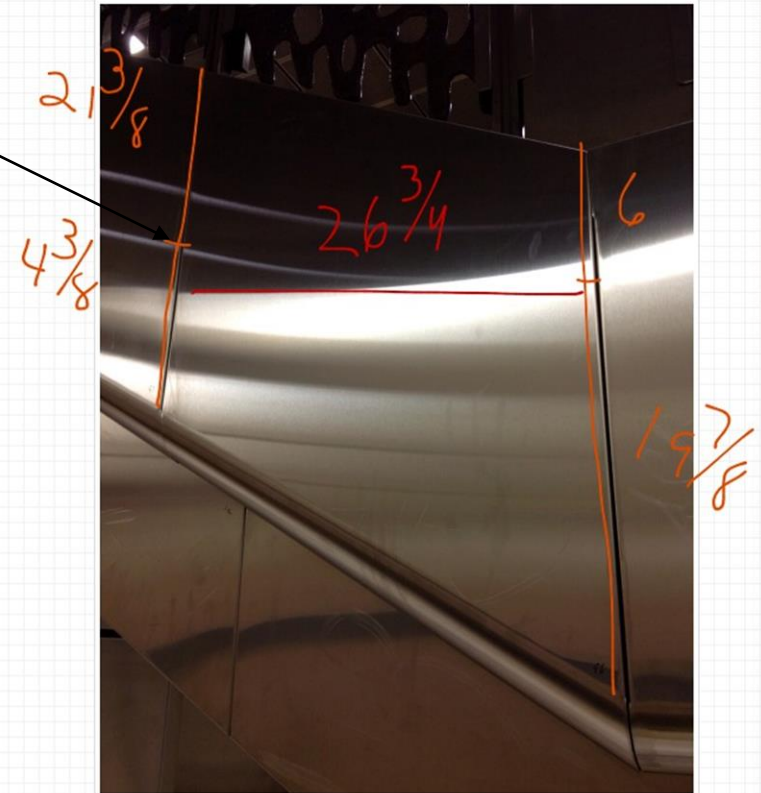
### *Using The Level*

- Find a level line across the panel using the level.
- Using the dry erase marker, make a mark on each side of panel.
- Then take measurements from this mark to the top and bottom of each corner and capture. This will ensure you're capturing each leg of the panel for a snug fit.

P-61



P-96



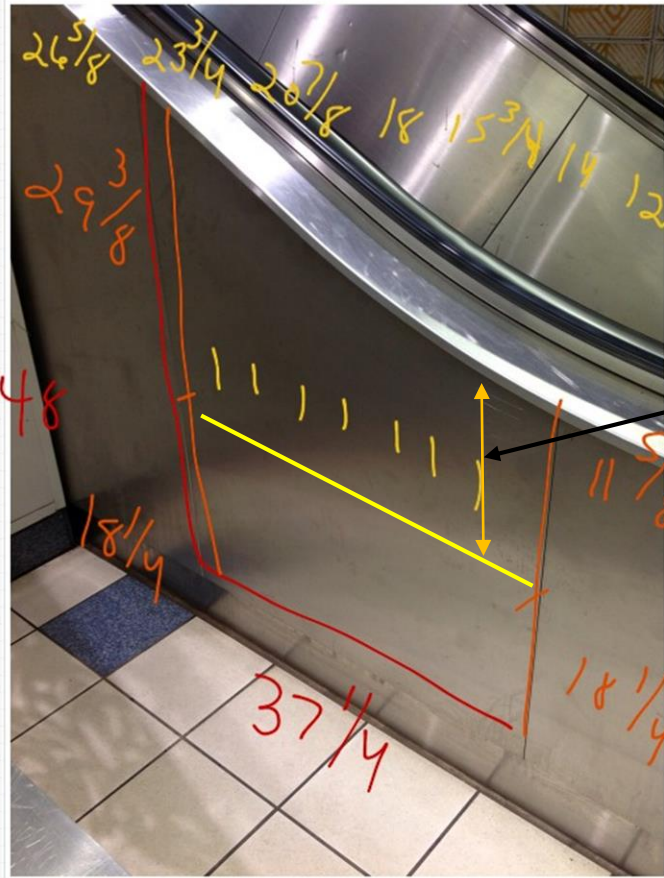


## Metal Shield and Custom Shield Measuring Guide:

### *Using The Level to Capture Curves*

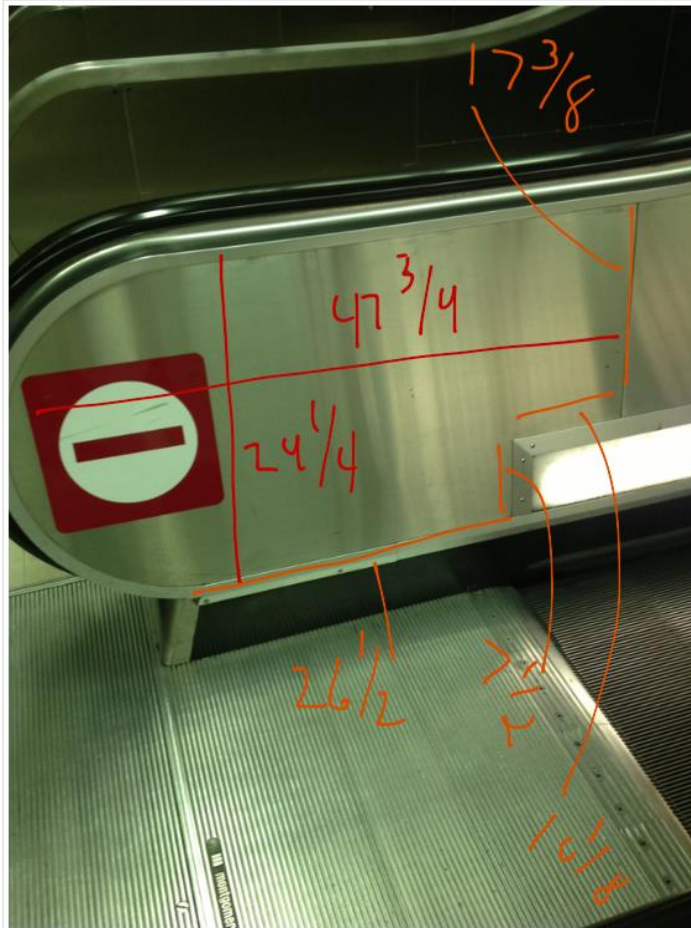
- Use the same technique with the level as before to get measurements of each leg for a snug fit, but also mark that level line all the way across the panel as indicated in yellow.
- Then while still using the level, make another mark every 5 inches from left to right. Indicated here in yellow dashes.
- Capture measurements from each mark up to the top of the curve.

P-148



# Metal Shield and Custom Shield Measuring Guide: Escalator Examples

P-55 Inside Esc



2

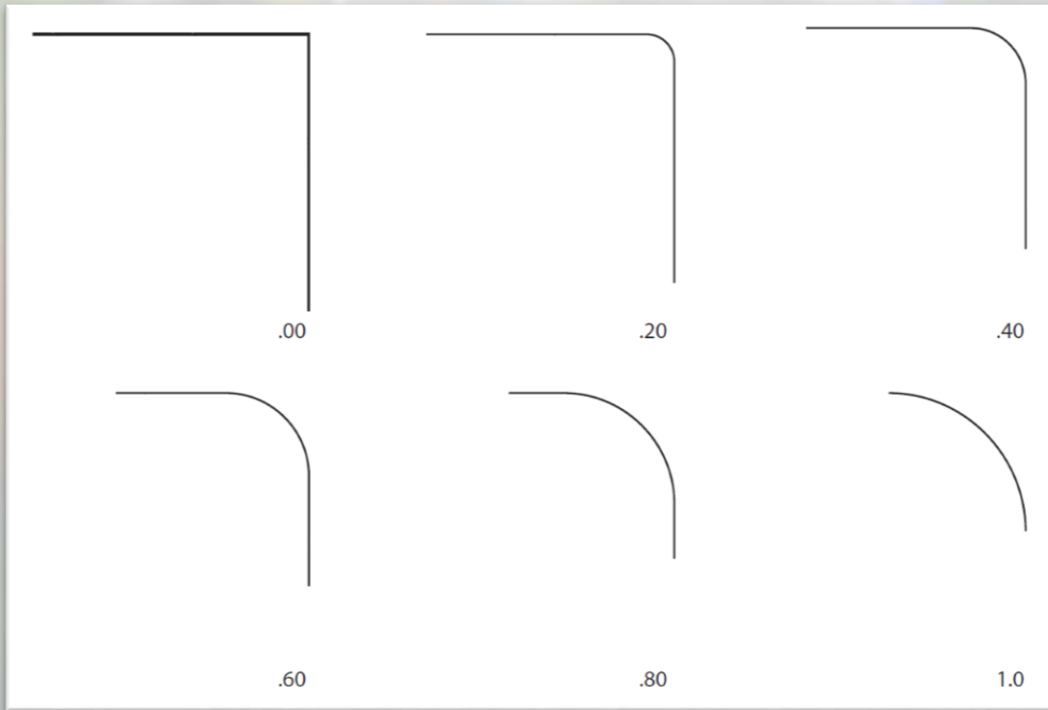


Note: The yellow measurements mark to the center of the circle.



# Metal Shield and Custom Shield Measuring Guide:

## Radius Guide



- Radius's are important and should be noted on drawings.
- We like to use a radius to minimize a peel point for vandals and to make the installation look factory.
- Most of the time the same radius is used throughout a project. This guide shows what each radius looks like. Traditional radius is .20.
- Radius's can also be used to match existing curves or designs in any design.

If you need anymore assistance with measuring or anymore guides, please send a request to [sales@graffiti-shield.com](mailto:sales@graffiti-shield.com).



## Pre Cut Take Off Sheet

- Key items:*

Part number, reductions, radius's, panel sizes, and quantities.

[illegible][illegible]

**GRAFFITI SHIELD<sup>INC</sup>**